

Children and young people's residential care, fostering and secure accommodation

North Wales' Market Position Statement 2019



CYDWEITHREDFA GWELLA GWASANAETHAU
GŦFAL A LLESANT **GOGLEDD CYMRU**
**NORTH WALES SOCIAL CARE AND WELL-BEING
SERVICES IMPROVEMENT COLLABORATIVE**



**GIG
CYMRU
NHS
WALES**
Bwrdd Iechyd Prifysgol
Betsi Cadwaladr
University Health Board



**CYNGOR SIR
YNYS MÔN
ISLE OF ANGLESEY
COUNTY COUNCIL**



CONWY
CYNGOR BWRDEISTREF SIROL
COUNTY BOROUGH COUNCIL

**sir ddinbych
denbighshire**
County Council



Introduction:

The North Wales Regional Partnership Board work with health and social services, businesses, organisations, charities, communities, carers and others. We want to deliver real change to the health and social care system in our area. We are working together to make sure all care and support is of the highest quality and provides value for money.

We want to meet people's needs now and in the future. This includes children and young people who are looked after in:

- **Residential care** – care in a home with paid staff
- **Foster care** – care with a family in their home
- **Secure accommodation** – a safe and secure place.

Local authorities have some residential placements and in-house foster care places. They also pay providers for extra places.

There is no secure accommodation in North Wales, so local authorities have to pay other external organisers, known as 'providers' for this.

We got **£3 million** from the Transformation Fund 'Healthier Wales'. Over the next 3 years, we will use this to reduce the numbers of children and young people entering the care system. For more information on this project:

northwalescollaborative.wales/the-north-wales-response-to-a-healthier-wales

Our Mission

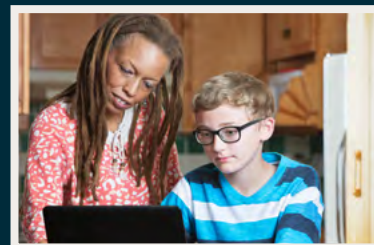
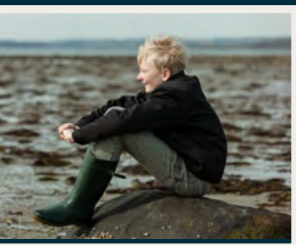
We aim to improve the health and well-being of everyone across North Wales.

We work with:

- the Children's Transformation Programme Board
- the Regional Commissioning Board
- the Regional Heads of Children's Services Group
- Betsi Cadwaladr University Health Board (BCUHB).

We also worked with commissioners and the children and young people who use services to produce this **Market Position Statement**.

i Commissioners are people who work in the local authorities and health board; they decide who should provide each service and how much should be paid for these services.



Market Position Statement

We need to make sure there are enough places and support for looked after children and young people now and in the future.

This Market Position Statement shows:

- how many places we have and what we will need
- what types of places we have and what we will need
- what support services we have and what we will need
- what opportunities we have to shape this demand.

Some facts about North Wales

In 2018 there were **1219** looked after children and young people in North Wales. The number is increasing, but we don't think there will be a large increase in the future.

We predict the number of children and young people in North Wales will grow by 2%:

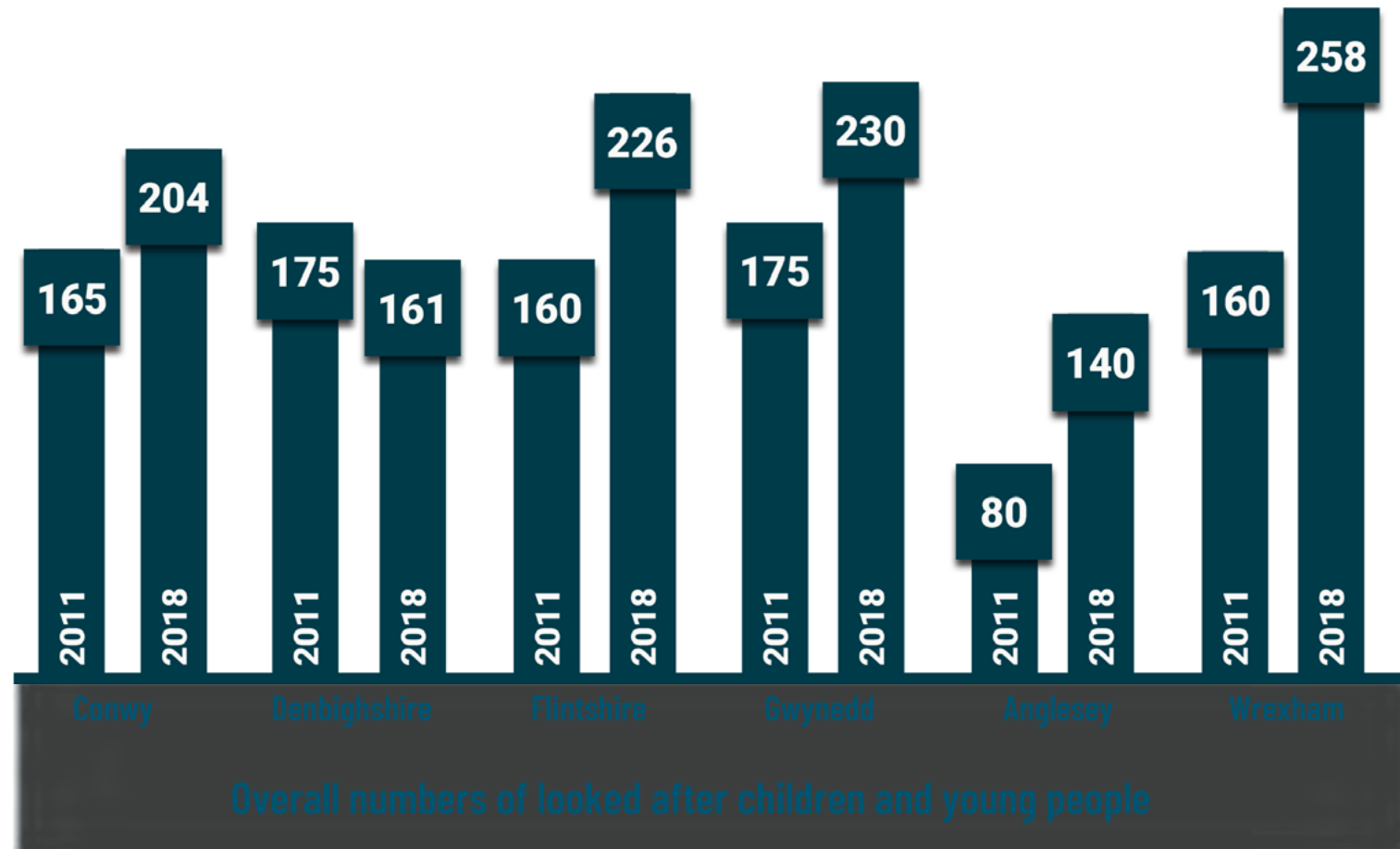


Our aim

We want high quality care that helps children and young people reach their goals and respects their culture and language.

We want placements as close to their home as possible. This helps staff work with local providers and respond quicker and easier to needs.

We want to step in early and engage with local providers to find the best placement.

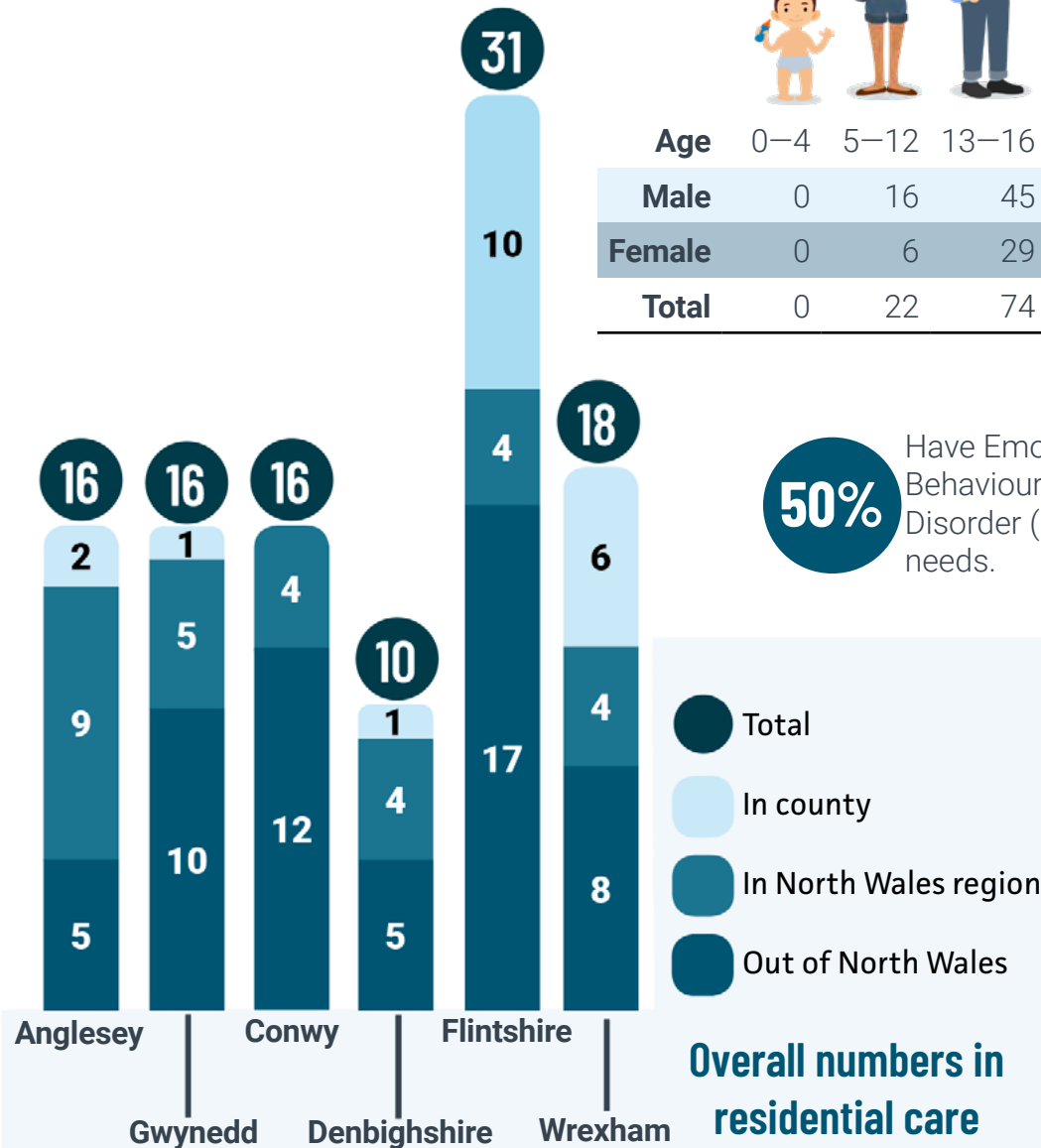


Residential Care

107 children and young people are in residential care.



Age	0–4	5–12	13–16	17–18	Total
Male	0	16	45	8	69
Female	0	6	29	3	38
Total	0	22	74	11	107

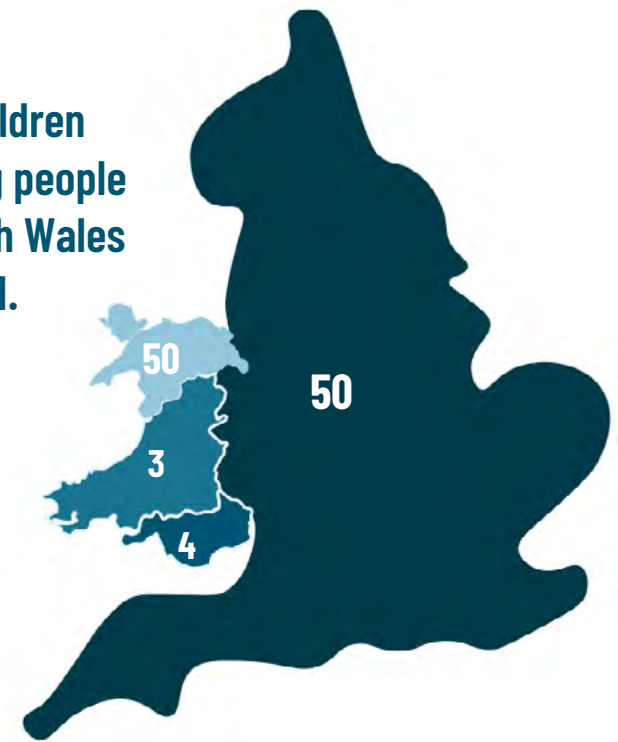


50% Have Emotional Behavioural Disorder (EBD) needs.

- Total
- In county
- In North Wales region
- Out of North Wales

Overall numbers in residential care

Where children and young people from North Wales are placed.



Children and young people are placed outside North Wales for different reasons:

- the placement was the only one with the support needed
- there was no local placement to match the needs
- no suitable placement within region
- the placement could support specific disability needs.



The latest published figures are detailed in the full market position statement available on our website:

northwalescollaborative.wales/commissioning

Residential Care

Suppliers

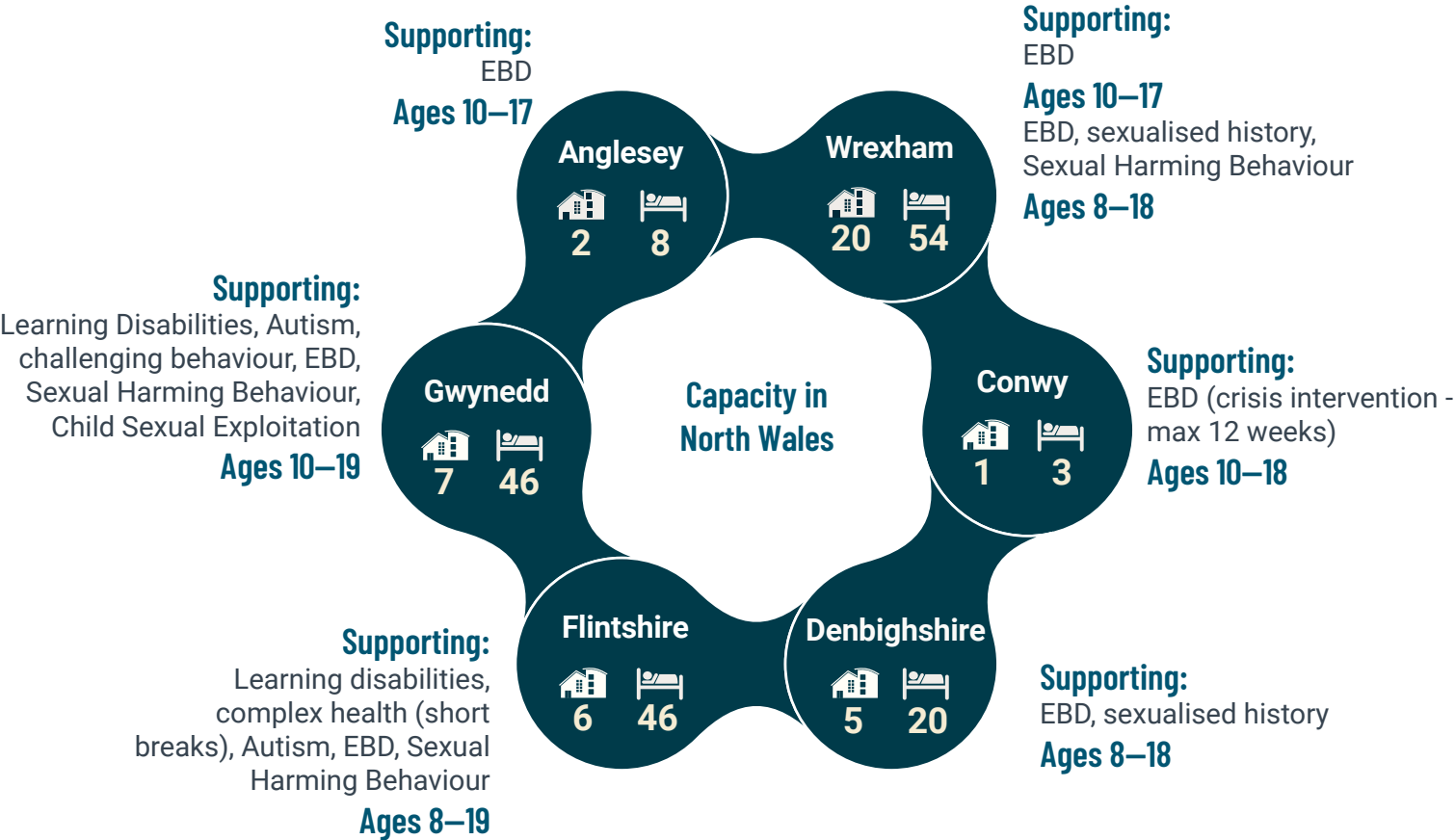
There are **14 independent suppliers** of residential care in North Wales. They have:

-  **41** residential care homes
 -  **177** registered places (beds)
- and these are broken down here ➡

In 2018/9 we spent

£20M

on residential care with providers.



Residential Care

What we need

We need more respite placements:

- to give parents and carers a break when they are supporting children with complex and challenging behaviour
- for parents who have mental health problems or learning disabilities.

We want to work with local providers to make sure there's enough support for children and young people:

- with complex and challenging behaviour
- needing crisis and emergency support
- moving out of secure accommodation
- needing short term support (respite)
- needing an alternative to hospital admission
- needing specific therapeutic support.

Priorities

We want children and young people to be cared for as close to home as possible.

We want services to step in early and develop their work with families at the edge-of-care.

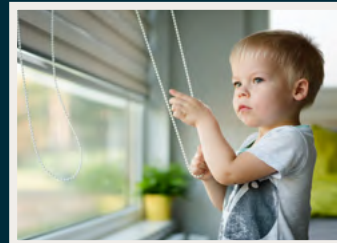
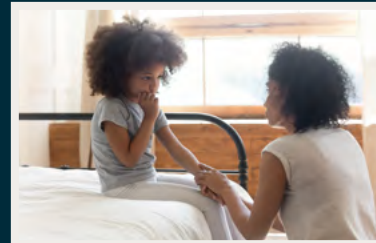
We want to improve how we assess and match children and young people to placements.

We want all placements to be high quality and value for money.

We will use our Quality Monitoring Framework to check placements.

We will also continue to:

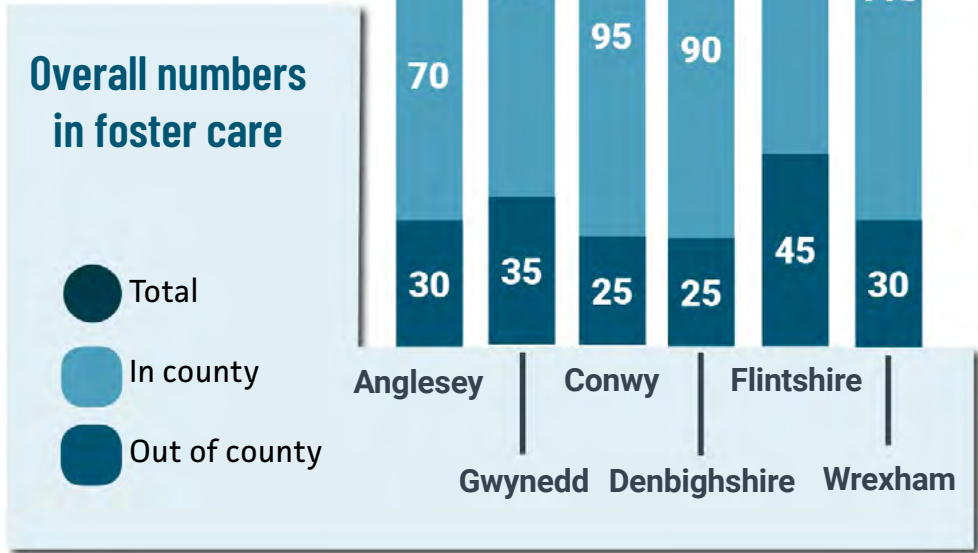
- work with local residential care providers
- support care providers to improve the Welsh language skills of the workforce
- work with the Children's Commissioning Consortium Cymru (4Cs) that manages national contracts for residential care and fostering services to improve the availability and the quality of services.



Fostering

760 children and young people are in foster care.

195 of the foster placements were with family or friends.

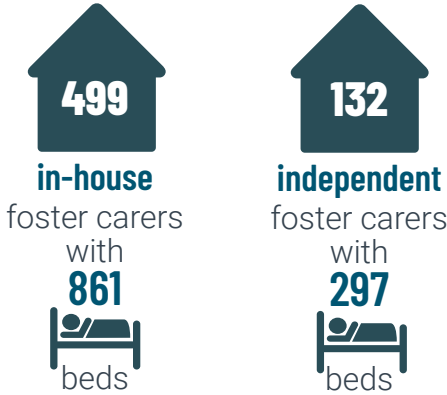


Suppliers

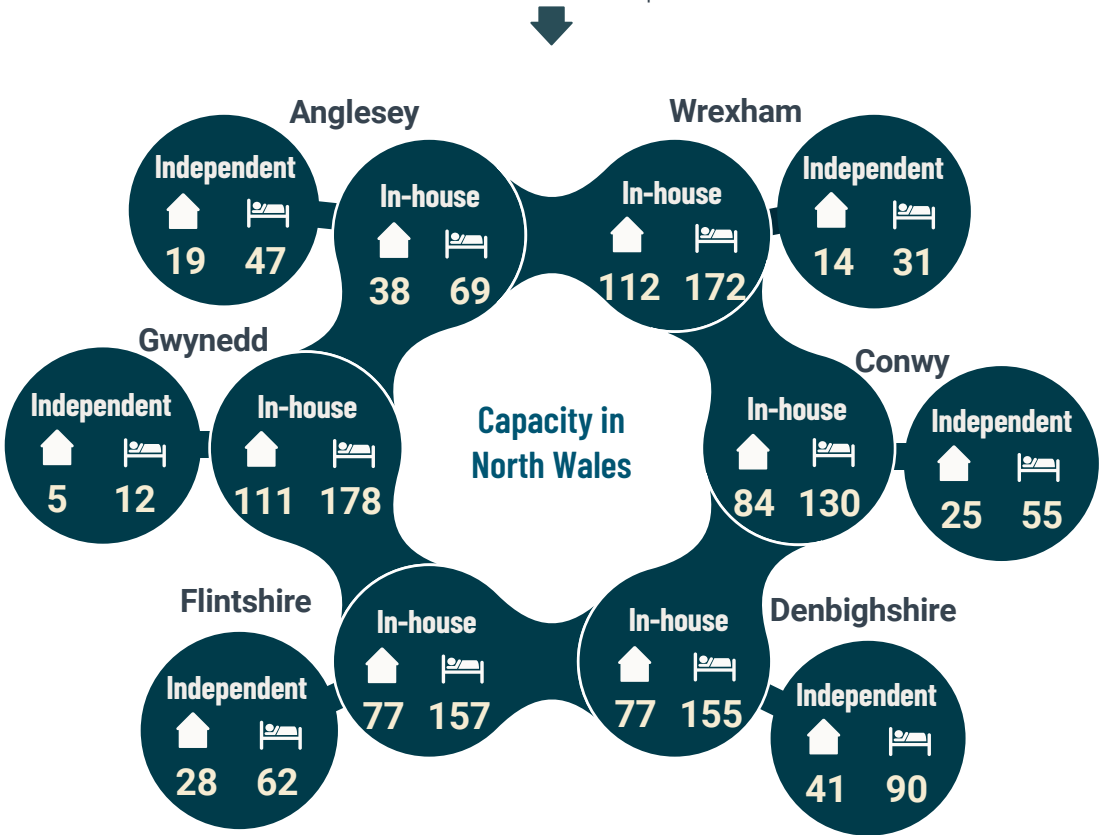
Each local authority has its own in-house fostering services.

We also work with the Independent Fostering Agencies. Some of their providers are charities or co-operatives.

Our region has:



This breaks down these placements



Fostering

What we need

We need more foster care placements for:

- disabled children and young people needing short-breaks
- young offenders
- refugees, asylum seekers or immigrants
- young parents
- sibling groups
- emergency situations.

We also need placements for children and young people:

- with behavioural problems
- with a history of experimenting with fire
- at risk of sexual exploitation or trafficking
- with a history of sexually harmful behaviour
- with a history of running away
- with complex disabilities
- with a history of alcohol or drug misuse
- waiting for court appearances
- who need a single placement household.

All fostering placements should:

- provide a positive experience of family life
- be safe, stable and nurturing
- meet needs
- help children and young people reach their goals
- improve life opportunities
- help children and young people keep relationships (if they want to and it's in their best interests) with their birth families.

The North Wales Fostering Managers Group work together to improve support provided by and available to Local Authority registered Foster Carers. They work with other Local Authority Fostering Services as part of the National (Wales) Fostering Framework.

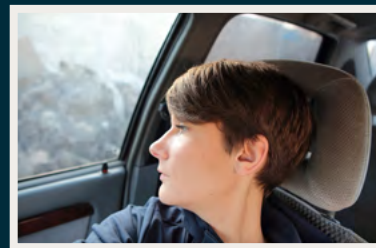
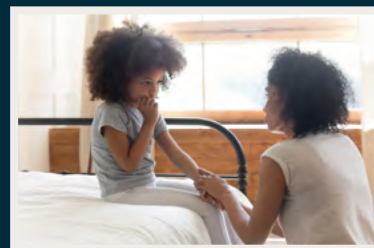
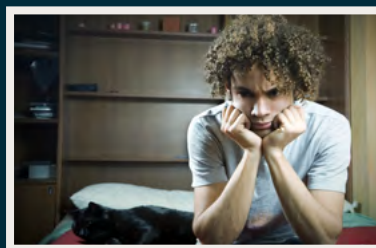
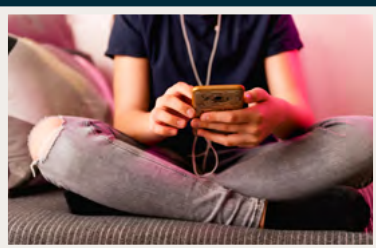
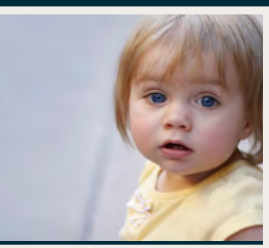
Priorities

We want to ensure we have enough in-house and independent foster care families to meet the needs of children and young people from North Wales.

We want to focus on finding the right foster families for children and young people with more complex circumstances or needs.

We want to develop and support fostering placements so fewer children and young people need residential care.

We want to work with Independent Fostering Agencies to develop foster carers able to provide a wider range of placements.



Safe and secure places to live

There are no secure homes in North Wales so children and young people have to be placed outside the area.



Reasons children and young people need secure accommodation include:

- serious mental health issues
- self-harm
- substance misuse
- sexual exploitation
- challenging behaviours
- sexually harming behaviours
- offending.

What we need

We know there are gaps in support for some children and young people.

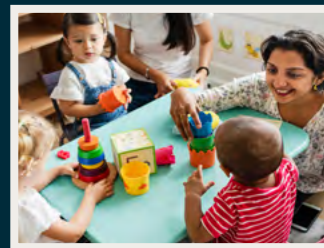
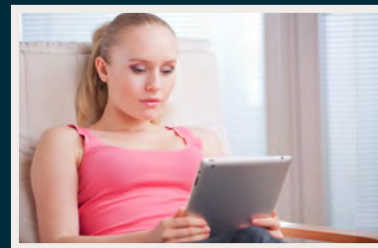
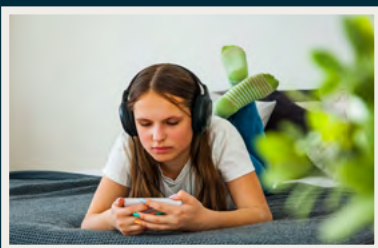
We often find it difficult to find the right place to accommodate and support children and young people who need a more controlled environment. We are keen to explore options for meeting their needs.

We don't feel there is a need for a new secure facility in North Wales. But, the Children's Commissioning Consortium Cymru group are looking at ways to improve the availability of safe places for these children and young people.

Priorities

We want to improve how we find and commission safe and secure placements.

We will support families, children and young people earlier, to avoid, where possible, the need for secure accommodation.



Going forward

We want to:

- reduce the number of children and young people needing care
- set up a framework to develop housing and support options for young adults leaving care
- develop a strategy so young people placed outside North Wales can return after they leave care
- make sure we have enough home care and support for disabled children and young people
- develop a range of opportunities to support families, children and young people with complex needs to have a short-break
- make sure that commissioned care and support meets children and young people's cultural and linguistic needs
- minimise the number of children and young people being placed far from home.

We are working with the Ministerial Advisory Group and Social Care Wales' Expert Reference Group on Residential Child Care on 'Improving Outcomes for Children in Residential Care'.

We will continue to:

- work with families, children and young people with experience of care to improve the range of care and support options
- make sure there are more placements closer to home
- meet with residential care providers to spot opportunities and match placements better
- develop fostering opportunities including the role of Independent Fostering Agencies.

Thanks for reading this

You can read the full version of this document here:

northwalescollaborative.wales/commissioning

For more information:

✉ North Wales Social Care & Well-being
Services Improvement Collaborative
Denbighshire County Council
PO Box 62
Ruthin
Denbighshire
LL15 9AZ

☎ 01824 712432

